

RETAIL  
LEASE

Available



## EASTGATE MARKETPLACE

460 - 520 N Wilbur Avenue | Walla Walla, WA 99362

**Caleb Farnworth, CCIM**

425.289.2235

calebf@rosenharbottle.com

**Todd Wright**

509.386.2471

toddwright@windermere.com

425.454.3030  
rosenharbottle.com

PO Box 5003  
Bellevue, WA 98009 - 5003



# STAPLES, HARBOR FREIGHT, & ALBERTSON'S ANCHORED RETAIL CENTER

2,842 SF AVAILABLE

Retail Rate: \$14.00/SF

Retail NNN: \$5.34/SF

## PROPERTY DETAILS:

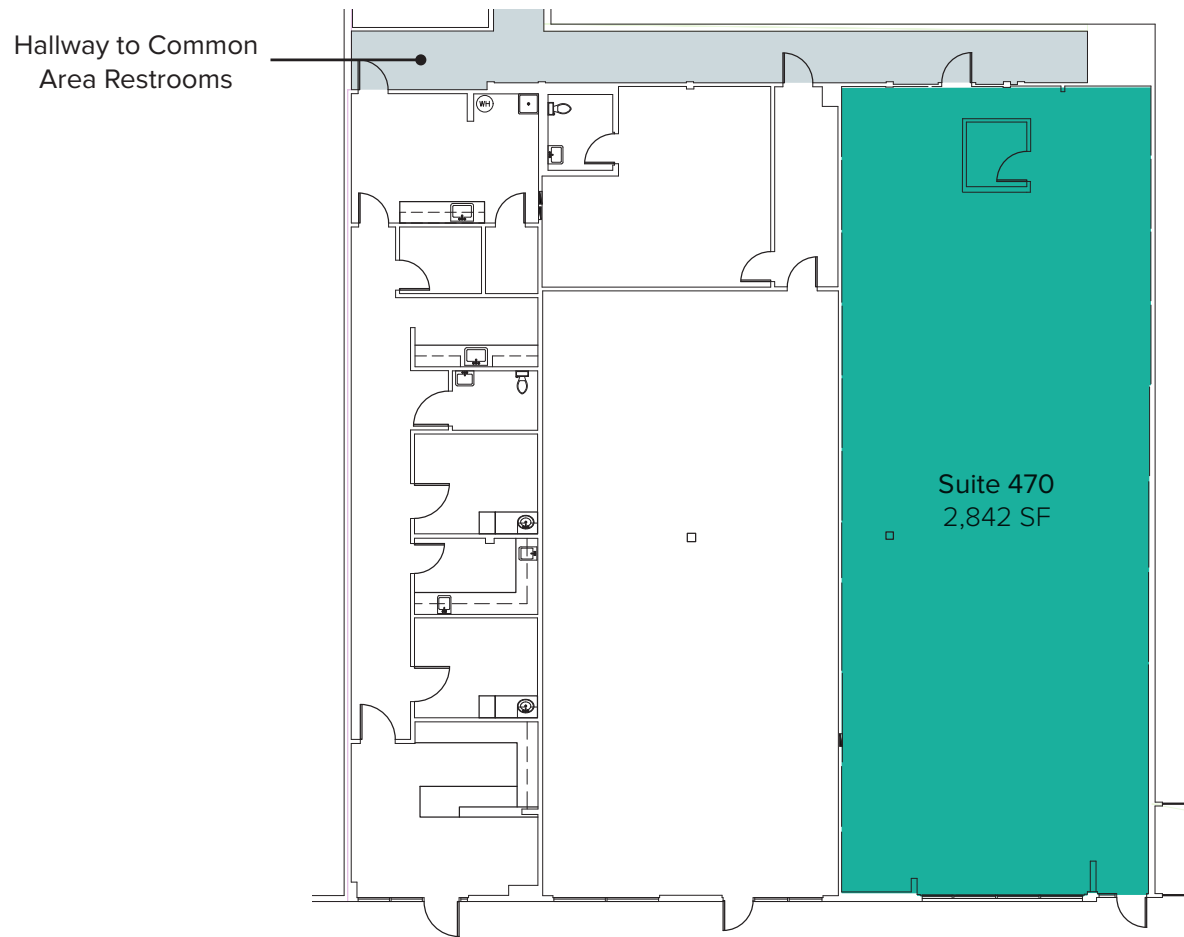
- Building Signage
- Tenant Improvement Allowance Available
- Quick Access to Highway-12 and Walla Walla Regional Airport
- Abundant Parking
- Neighboring Retailers Include Joann Fabrics and Crafts, Dollar Tree, Rite Aid, McDonald's, and Subway



The information provided herein has been obtained from sources believed to be reliable, but no representation or warranty, express or implied, is made with respect to the accuracy or completeness of any such information. Each prospective buyer or tenant should independently investigate, evaluate and verify all information provided herein and any other matters deemed material. Please consult your attorney, tax advisor or other professional advisor. The terms of sale or lease set forth herein are subject to change or withdrawal at any time and without notice.

# RETAIL FLOOR PLAN

Suite	Square Feet	Rate	Notes
470	2,842 SF	\$14.00/SF, NNN	Open retail space with new flooring and paint, and heavy electric power available.



The information provided herein has been obtained from sources believed to be reliable, but no representation or warranty, express or implied, is made with respect to the accuracy or completeness of any such information. Each prospective buyer or tenant should independently investigate, evaluate and verify all information provided herein and any other matters deemed material. Please consult your attorney, tax advisor or other professional advisor. The terms of sale or lease set forth herein are subject to change or withdrawal at any time and without notice.

# LOCATION MAP

