

**INDUSTRIAL  
LEASE**



## **QUAD 95, Building A**

**14677 – 14691 NE 95th Street | Redmond, WA**

**Grant Rubenstein**

425.289.2220

grant@rosenharbottle.com

425.454.3030  
rosenharbottle.com

PO Box 5003  
Bellevue, WA 98009 - 5003



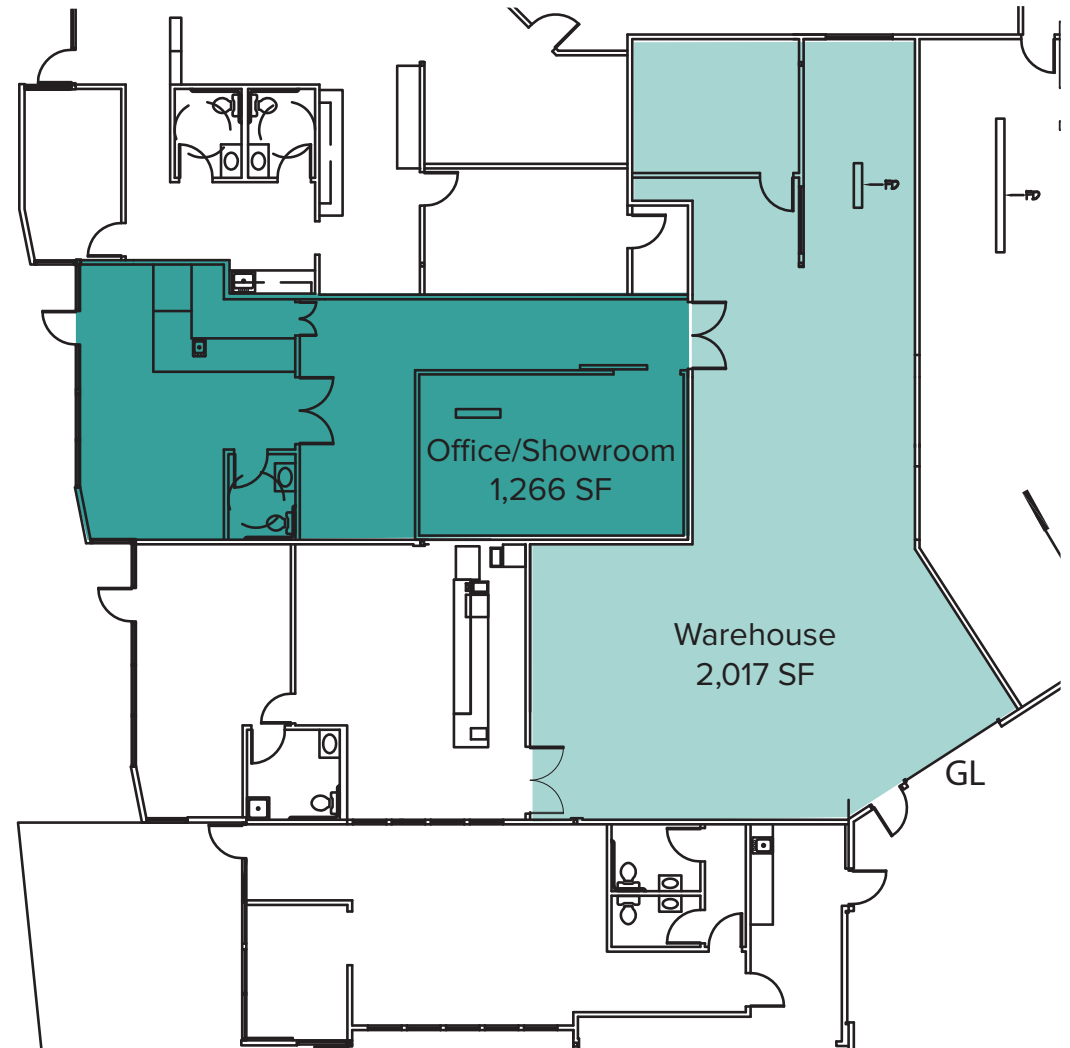
# RARE REDMOND LOCATION

## SUITE 14679 FEATURES:

- Available with 30 Days' Notice
- 3,283 SF Total
- \$2.00/SF, NNN
- Retail/Showroom & Warehouse Space
- Frontage on 95th Street
- Reception Area
- Formerly a Portion of Black Raven Brewery

## PROPERTY DETAILS:

- Retail Visibility
- Located on Busy Corner of 95th and Willows
- Next Door to Black Raven Brewery
- High-Image Business Park
- Quality Concrete Tilt-Up Construction
- Grade-Level Loading



# LOCATION MAP

