



INDUSTRIAL
LEASE

EASTLAKE BUSINESS PARK

18336-18398 Redmond-Fall City Road | Redmond, WA 98052

Caleb Farnworth, CCIM

425.289.2235

calebf@rosenharbottle.com

Stossi Tsantilas

425.279.7943

stossit@rosenharbottle.com

425.454.3030
rosenharbottle.com

PO Box 5003
Bellevue, WA 98009 - 5003





EASTSIDE INDUSTRIAL SPACES WITH OFFICE

2,197 SF Available

\$1.95/SF, NNN

PROPERTY DETAILS:

- Professional, Business Park Setting
- Quick Access to SR 520, Union Hill & Downtown Redmond
- Nearby Amenities Include Home Depot, Whole Foods, Chipotle, Target, Kohl's, Costco & More
- Located Minutes From Future Light Rail Stations

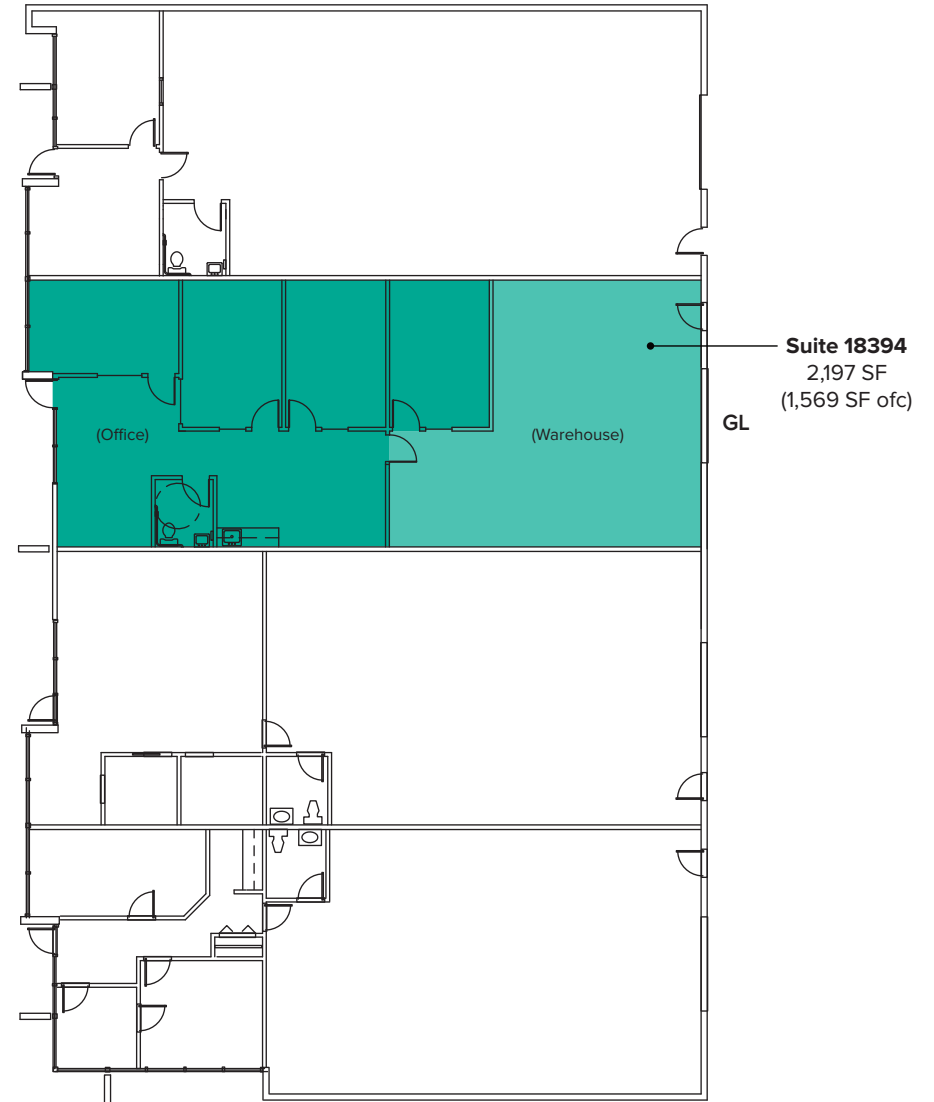
The information provided herein has been obtained from sources believed to be reliable, but no representation or warranty, express or implied, is made with respect to the accuracy or completeness of any such information. Each prospective buyer or tenant should independently investigate, evaluate and verify all information provided herein and any other matters deemed material. Please consult your attorney, tax advisor or other professional advisor. The terms of sale or lease set forth herein are subject to change or withdrawal at any time and without notice.



BUILDING D FLOOR PLAN

SUITE 18394 FEATURES

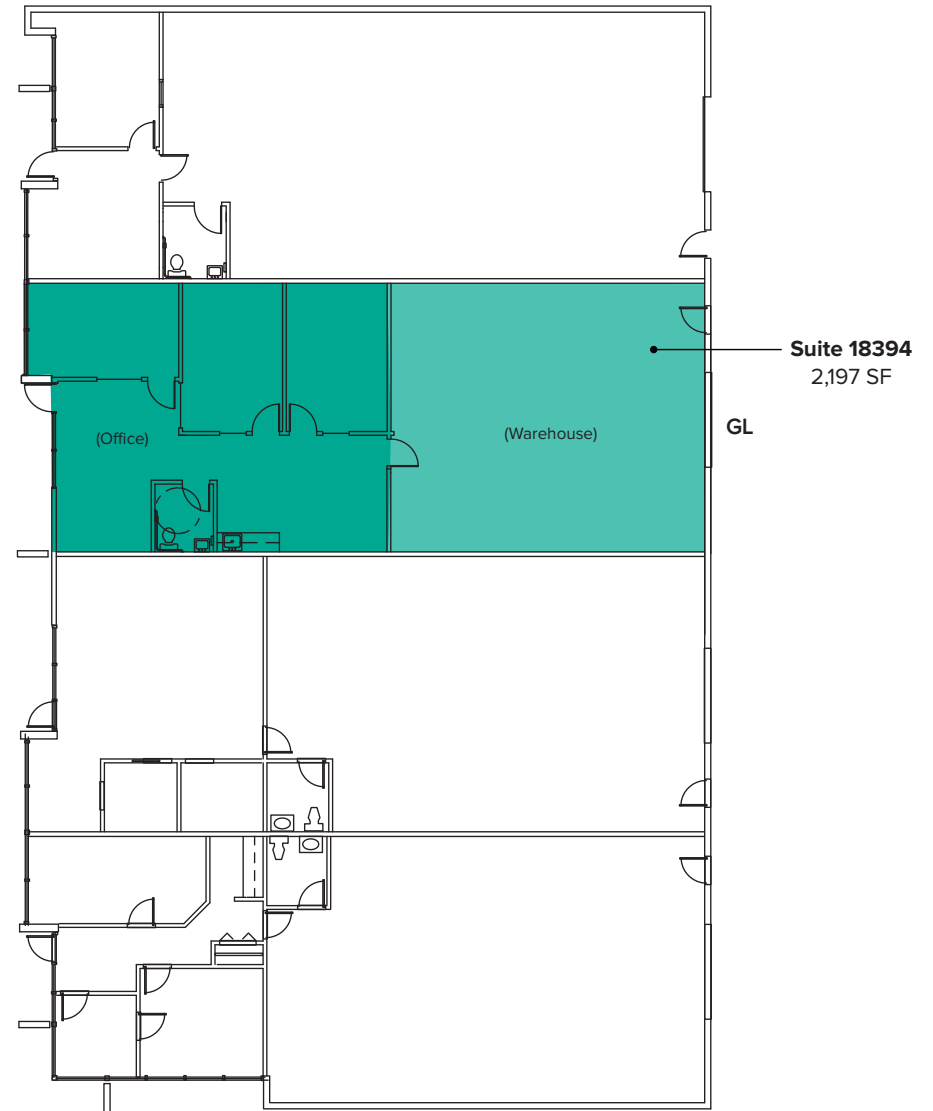
- Available with 30 Days' Notice
- 2,197 SF (1,569 SF ofc)
- \$1.95/SF, NNN
- Includes Office Area with Reception
- 4 Private Offices
- Kitchenette
- 1 Restroom
- Warehouse Area
- 1 Grade-Level Roll-up Loading Door
- 14' - 16' Clear Height in Warehouse



BUILDING D SAMPLE FLOOR PLAN

SUITE 18394 FEATURES

- Available with 30 Days' Notice
- 2,197 SF
- \$1.95/SF, NNN
- Includes Office Area with Reception
- 3 Private Offices
- Kitchenette
- 1 Restroom
- Warehouse Area
- 1 Grade-Level Roll-up Loading Door
- 14' - 16' Clear Height in Warehouse



LOCATION MAP



LOCATION MAP

