

OFFICE
LEASE



LYNNWOOD EAST BUSINESS PARK, Building B

2027 - 2031 196th Street SW | Lynnwood, WA

Caleb Farnworth, CCIM

425.289.2235

calebf@rosenharbottle.com

Stossi Tsantilas

425.279.7943

stossit@rosenharbottle.com

425.454.3030
rosenharbottle.com

PO Box 5003
Bellevue, WA 98009 - 5003





OFFICE WITH IMMEDIATE ACCESS TO I-5, I-405, & SR-525

857 SF Available

FEATURES:

- Professional Image
- Easy Ingress/Egress
- Abundant Parking
- Monument Signage and Building Signage Available
- Immediate Access to I-5, I-405, and SR-525

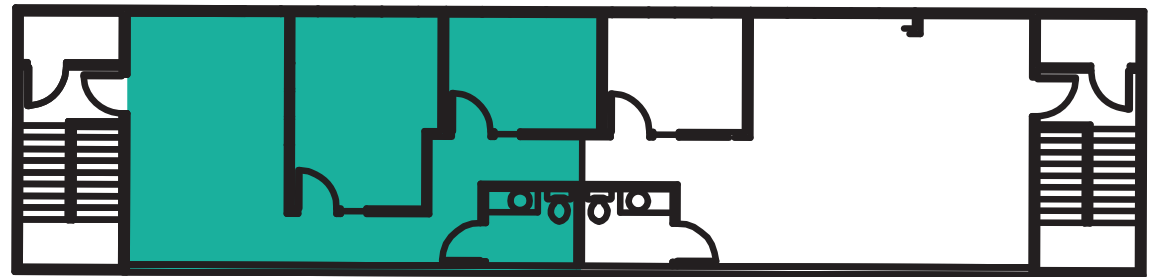
The information provided herein has been obtained from sources believed to be reliable, but no representation or warranty, express or implied, is made with respect to the accuracy or completeness of any such information. Each prospective buyer or tenant should independently investigate, evaluate and verify all information provided herein and any other matters deemed material. Please consult your attorney, tax advisor or other professional advisor. The terms of sale or lease set forth herein are subject to change or withdrawal at any time and without notice.

SUITE B-201 FLOOR PLAN

FEATURES

- **Available Now**
- **857 SF**
- **\$1,299/Month, NNN**
- 2nd Floor Office Space
- Open Work Area
- 1 Private Office
- 1 Conference Room/Executive Office
- 1 Restroom

Suite B-201
857 SF



LOCATION MAP



DRIVE TIMES:

- I-5: 2 Min.
- I-405: 3 Min.
- Alderwood Mall: 4 Min.
- Seattle: 21 Min.
- Bellevue: 20 Min.